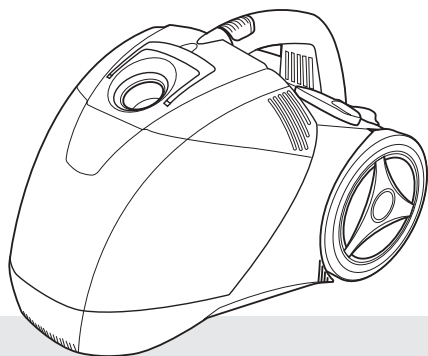


Goblin®

Scoot bagless vacuum cleaner



Please read and keep these instructions



UK

Helpline 0870 060 2604
Replacement parts 0870 167 6635

Ireland

1800 409119

getting the best from your new cleaner...

If your cleaner isn't picking up as well as it should, please check

- **Dust container**

It is important to empty the dust container regularly, otherwise the performance of the cleaner will be impaired.

- **Filters**

It is important that the filters are cleaned regularly to allow air through the appliance. The washable filters should be regularly washed in warm water and left to air dry.

- **Blockages**

Check the nozzle, tubes and hose for blockages.

- **Floor nozzle**

Check that the floor nozzle brushes are at the correct setting for the surface being cleaned.

- *Brushes down for hard floors*
- *Brushes retracted for carpets / rugs.*



www.morphyrichards.co.uk

Important safety instructions

The use of any electrical appliance requires the following of common sense safety rules.

Primarily there is danger of personal injury and secondly danger of damage to the appliance and property. These are indicated in the text by the following two conventions:

WARNING: Danger of personal injury.

IMPORTANT: Damage to the appliance

In addition we offer the following essential safety advice.

Location

- Do not use or keep this product outside when it is raining.
- Do not store the appliance near hot ovens or heating appliances.

Mains lead

- Do not allow the mains lead to become strained or run this appliance over it.
- If the electrical cable becomes damaged the complete cable assembly must be replaced. Do not attempt this task yourself, contact Goblin using the helpline number.

Children

- Children do not understand the dangers associated with operating electrical appliances. Never allow children to use this appliance.

Other safety considerations

- Never use the appliance without the filter installed.
- Never use the appliance to vacuum hot ashes, broken glass, sharp objects or liquids.
- Never use in the presence of explosive liquids or vapours.

- Never pick up inflammable or poisonous liquids such as petrol, copier toner, or other volatile substances. Never pick up acids, asbestos or asbestos dust.
- Always disconnect the appliance from the mains supply after use or prior to cleaning or emptying the dust container.
- The appliance should never be left running unsupervised.
- Never modify the cleaner in any way.
- Repairs to electrical appliances are only to be undertaken by trained personnel. Unprofessional repairs can be dangerous for users.
- Use only genuine Goblin spare parts and accessories.

Electrical requirements

Check that the voltage on the rating plate of your appliance corresponds with your house electricity supply which must be A.C. (Alternating Current).

If the socket outlets in your home are not suitable for the plug supplied with this appliance, the plug should be removed and the appropriate one fitted.

If you cut off the plug and let go of the cable it will rewind into the machine therefore, you must pull out a length of cable and secure it before cutting off the plug and fitting a new one.

WARNING: The plug removed from the mains lead, if severed, must be destroyed as a plug with bared flexible cord is hazardous if engaged into a live socket outlet.

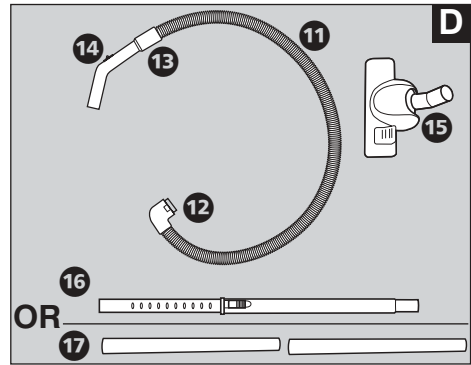
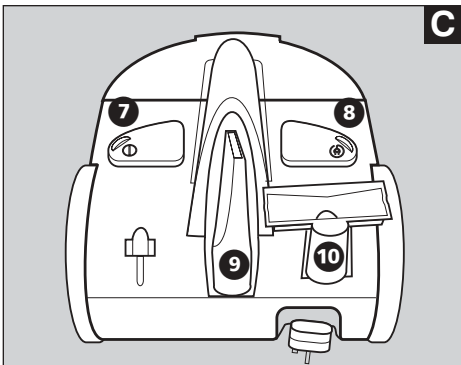
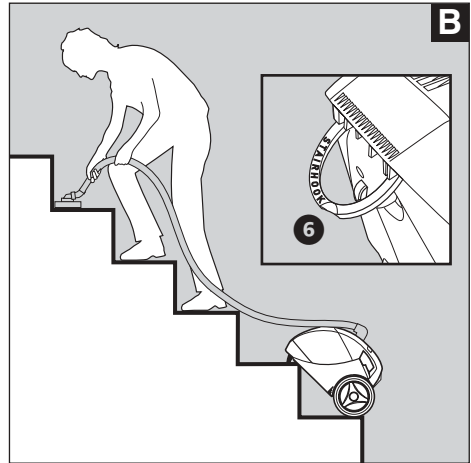
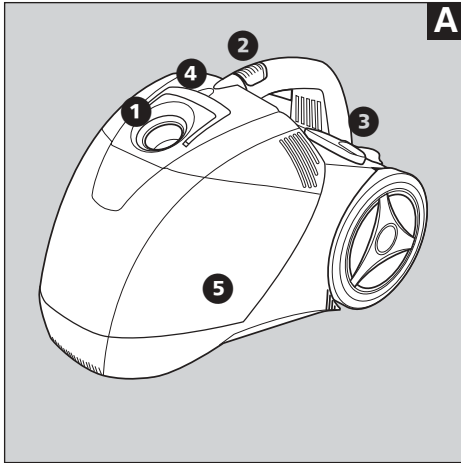
Should the fuse in the 13 amp plug require replacement, a BS1362 13 amp fuse must be fitted.

Features

- 1 Hose inlet
- 2 Dust container release button
- 3 Carrying handle
- 4 Handle on cover
- 5 Dust container
- 6 Stair lock bracket
- 7 On/off button
- 8 Cable rewind button

Accessories you should have

- 9 Crevice tool
 - 10 Upholstery nozzle
- Parts 11 to 14 are part of the hose and come assembled as one part.**
- 11 Flexible hose
 - 12 Hose end
 - 13 Hose handle
 - 14 Handle suction control
- OR (depending on model)**
- 15 Floor nozzle
 - 16 Adjustable telescopic tube
 - 17 Extension tubes



Assembly

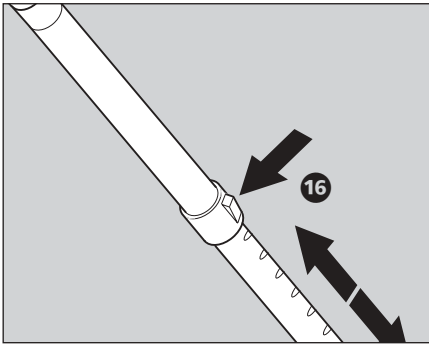
Step 1 Hose 11

Insert the hose end 12 into the hose inlet 1 until it clips securely into position.

Step 2 Telescopic tube 16

Certain models only

- 1 Press the release button on the tube and extend the tube to the required length.
- 2 Attach the telescopic tube to the handle of the hose.



Extension tubes 17

Certain models only

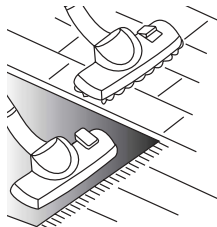
- 1 Join the two tubes together.
- 2 Attach the extension tubes to the handle of the hose.

Step 3 Floor nozzle 15

Fit the floor nozzle onto the end of the extension tube.

The nozzle features an adjustment pedal, that can be adjusted to suit the floor surface.

- Brushes down for hard floors.
- Brushes retracted for carpets and rugs.



Step 4 Upholstery nozzle 10

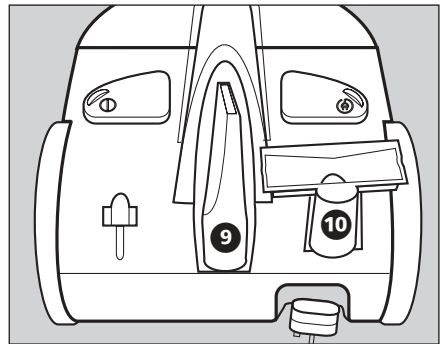
Recommended applications include stairs, upholstery, mattresses and curtains.

Crevice tool 9

Recommended applications include joints, folds and corners.

These accessories can either be fitted onto the extension tube or directly onto the handle, depending on the cleaning task.

The upholstery nozzle and crevice tool can be stored on the back of the cleaner.

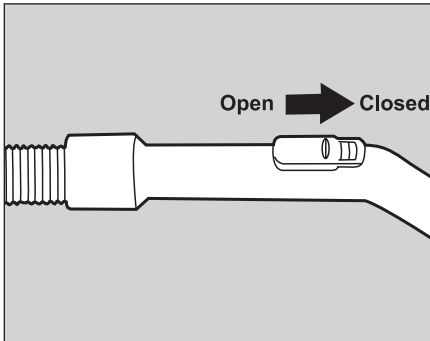


Operation

- 1 Ensure the full length of cable is pulled out.
- 2 Plug into the electrical socket.
- 3 Switch the cleaner on using the on/off button 7.

Controlling suction power

Suction power can be adjusted using the handle suction control 14. Keep it closed for full suction and open for reduced suction.

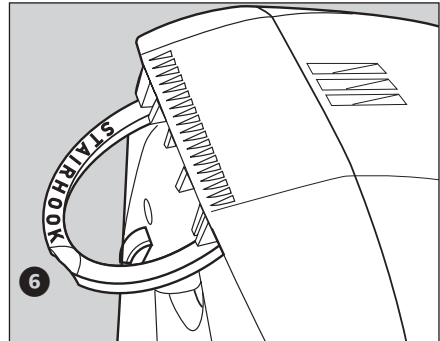


Stair lock

This unique system assists with stair cleaning. The stairhook 6, found underneath, is lifted out as shown and locked onto the stairs. In addition, the rear wheels automatically lock in position as further security.

After use, simply push the stairhook firmly back into position.

IMPORTANT: When cleaning on stairs, for convenience and safety, work from the bottom to the top with the desired accessory connected directly onto the hose handle. It is recommended not to use the extension tube.

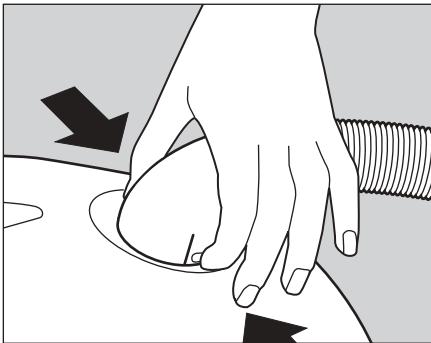


Emptying the dust container

IMPORTANT: To obtain best results from your cleaner it is important to empty the dust container and clean the filters regularly, otherwise the airflow and suction power will be reduced. If the dust container is not full and performance deteriorates, first check if there are any blockages in the accessories or tubes. If these are clear, it is necessary to empty the dust container and clean the filter.

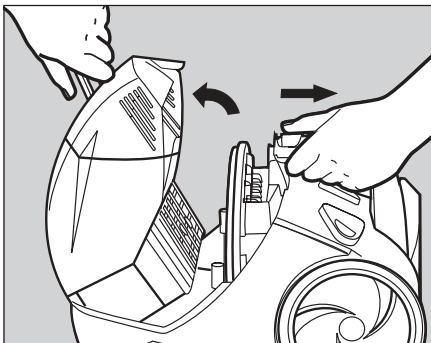
Step 1

Remove the hose by pressing in the clips and pulling the hose away from the hose inlet.



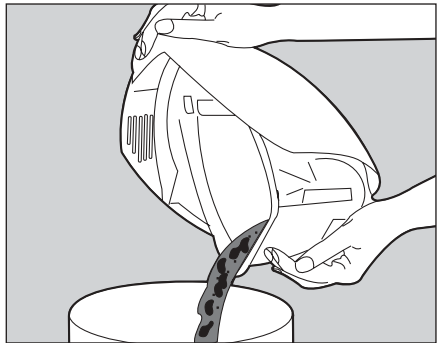
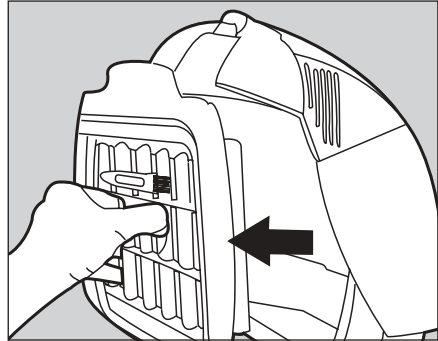
Step 2

Slide back the dust container release button **2** and lift off the dust container using the folding handle.



Step 3

Holding the dust container over a dustbin, grip the tabs on the back of the filter, pull to remove and empty out the dust.



3 CLEAN THE FILTER before replacing, see page 7.

4 Replace the clean filter, making sure that it is correctly fitted, then replace the dust container. Press down firmly until it clicks into position.

IMPORTANT: Do not operate your cleaner without the filters fitted.

Cleaning the filter

Everytime the dust container is emptied the filter should be cleaned. Pull the tabs at the side of the mesh filter cover to remove the pleated filter cover. Use the brush attached to the rear of the filter to brush the fine dust from between the filter pleats. Dust can also be removed by rigorously shaking the filter. Refit the mesh filter cover and re-install the filter into the cleaner.

The filter should also be washed regularly in warm water, but do not use detergent. Allow to dry naturally and ensure it is totally dry before replacing it.

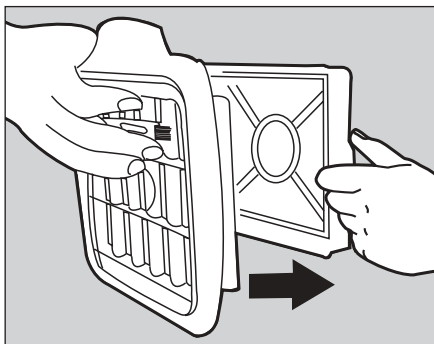
An additional filter (not filter cover or brush) is provided allowing continued use while one filter is washed and dried.

When changing the filters over ensure the filter cover is fitted to the filter that is being placed in the machine. The brush can also be attached to the new filter.

Note: A protection device maintains the air-flow to the motor if the filters become blocked.

When this operates the sound of the cleaner will increase slightly. If this happens, clean the filter and clear any blockage, the sound of the cleaner will then return to normal.

WARNING: Never use the appliance without the filters installed, otherwise damage to the product may occur which would not be covered by the guarantee.

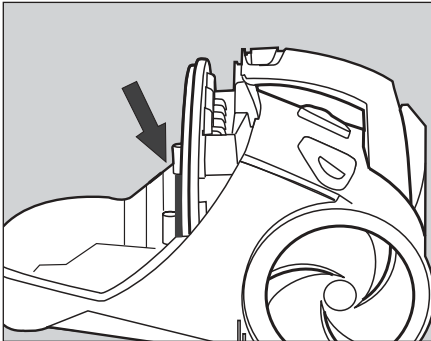


Cleaning the motor protection filter

The motor protection filter should be cleaned regularly by sliding out of its location and shaking rigorously to dislodge any dust.

The motor protection filter can also be washed in warm water and left to air dry.

IMPORTANT: Do not use detergents and ensure filter is thoroughly dry before re-inserting into the machine.

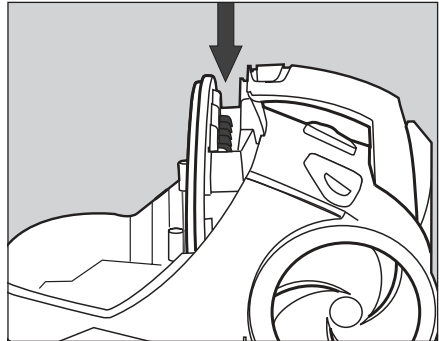


Cleaning and replacing the exhaust filter

The exhaust filter should be cleaned regularly by sliding out of its location.

The exhaust filter is non washable and should be replaced every 6 months.

Parts may be purchased from specialist retailers or by calling the replacement parts telephone line.



Storage and maintenance

Unplug the cleaner from the mains before cleaning.

Press the cable rewind button **3**, to rewind the cord into the storage unit.

The vacuum cleaner and all the accessories can be cleaned using a damp cloth and wiped dry.

To keep the underside of the floor nozzle clean, vacuum it at regular intervals using the crevice tool.

Purchasing replacement parts

Use only Goblin replacement parts and filters which can be purchased from specialist retailers or by calling the replacement parts telephone line.

Helpline

If you have any difficulty with your appliance, do not hesitate to call our helpline. We're more likely able to help than the store from where you bought it.

Please have the following information ready to enable our staff to deal with your query quickly:

- Name of the product
- Model number as shown on the underside of the appliance
- Serial number



Your two-year guarantee

- It is important to retain the retailers receipt as proof of purchase. Staple your receipt to this back cover for future reference.

Please quote the following information if the product develops a fault. These numbers can be found on the base of the product.

Model no. Serial no.

All Goblin products are individually tested before leaving the factory. In the unlikely event of any appliance proving to be faulty within 28 days of purchase it should be returned to the place of purchase for it to be replaced.

If the fault develops after 28 days and within 24 months of original purchase, you should take the appliance to your nearest service agent. A list containing details of your nearest service agent is included with your appliance but please contact the helpline quoting model number and serial number should you require further assistance. Repair or replacement of the product is subject to the exclusions set out below (1-5).

If you suspect a fault, follow the simple checks detailed below before returning the appliance or calling the helpline.

- Check the dust container and filters for blockages.
- Check the hose and tubes for blockages.
- Check the plug is firmly in the socket and the supply is switched on.

- Make sure the socket is working by trying another appliance.

If for any reason this item is replaced during the 2-year guarantee period, the guarantee on the new item will be calculated from original purchase date. Therefore it is vital to retain your original receipt or invoice to indicate the date of initial purchase.

To qualify for the two-year guarantee the appliance must have been used according to the manufacturers instructions. For example, filters must be cleaned regularly.

Goblin shall not be liable to replace or repair the goods under the terms of the Guarantee where:

- 1 The fault has been caused or is attributable to accidental use, misuse, negligent use or used contrary to the manufacturers recommendations or where the fault has been caused by power surges or damage caused in transit.
- 2 The appliance has been used on a voltage supply other than that marked on the products.
- 3 Repairs have been attempted by persons other than our service staff (or authorised dealer).
- 4 Where the appliance has been used for hire purposes or non-domestic use.
- 5 The guarantee excludes consumables such as filters.

This guarantee does not confer any rights other than those expressly set out above and does not cover any claims for consequential loss or damage. This guarantee is offered as an additional benefit and does not affect your statutory rights as a consumer.

- This guarantee is valid in the UK and Ireland only.

For additional information on Goblin products www.morphyrichards.co.uk

Goblin products are intended for household use only

Goblin has a policy of continuous improvement in product quality and design. The Company, therefore, reserves the right to change the specification of its models at any time.

Goblin®

*Registered address
The After Sales Division,
Goblin, Mexborough,
South Yorkshire, England, S64 8AJ*

Helpline (office hours)
UK 0870 060 2604
Republic of Ireland 1800 409119